

Medical Research Charities: Animals in research

Grants awarded in 2016



Background:

Over the last four years, AMRC has worked with our members to enable them to be more open about their funding of research involving animals. All of our work on this area can be found on our [website](#) and was guided by an Animal Research Working Group (ARWG) and Advisory Group through quarterly meetings. This included advice on communicating about the use of animals in medical research, and developing their procedures in line with considering the principles of 3Rs (replacement, reduction, refinement) during their peer review process.

In 2014, we asked our members to provide us with data regarding the use of animals in grants as part of our annual AMRC grant data collection. This request for data became a mandatory membership requirement as of 2016.

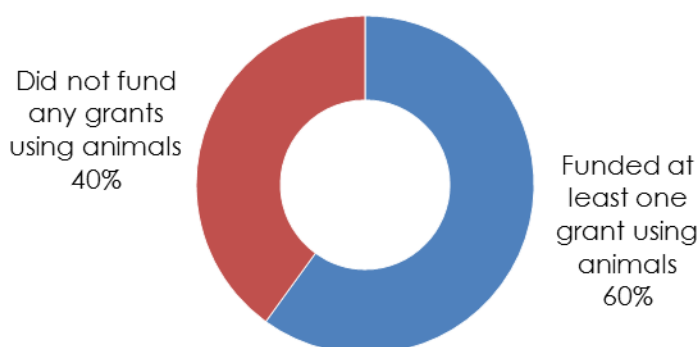
The following figures outline the number of grants funded by our member charities which involve animals and a breakdown of the types of animals used in 2016.

This analysis is based on grants that were awarded in 2016 and so the data may show earlier trends than the annual Home Office statistics on animal use.

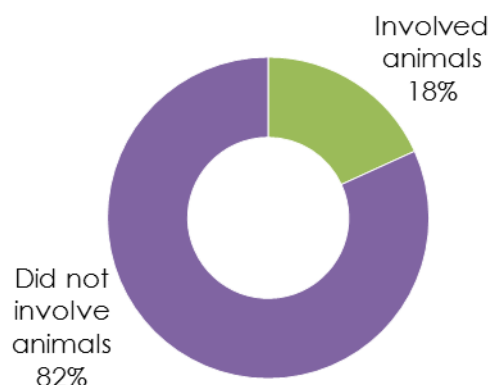
Research grants involving animal research:

136 charities provided grant data to us last year. 16 of these did not fund any grants in 2016. 99% all of member charities provided data on the use of animals.

How many charities funded research that involved animals?



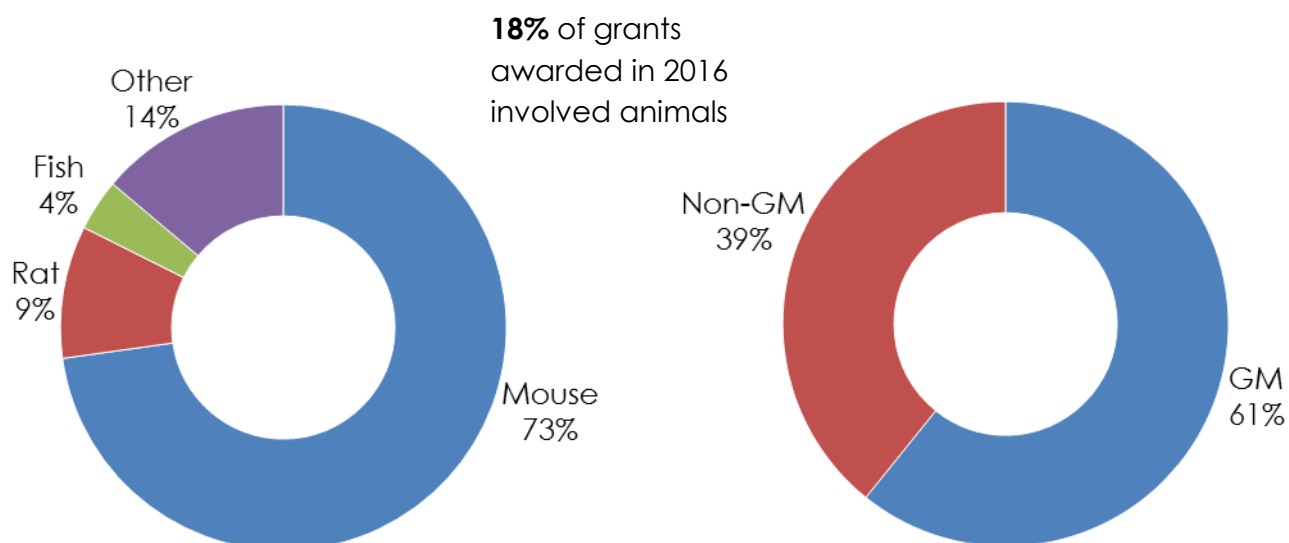
How many grants involved animals?



Almost all our member charities (who returned data and funded grants) provided us with data on grants involving animals. 72 (60%) of these members funded at least one grant involving animals. However, this only made up 18.2% of the total number of grants. This figure is not evenly distributed amongst members as the number of grants involving animals varies from 2-100% across funders (that fund animals).

Medical Research Charities: Animals in research

A small portion of grants awarded in 2016 involved animals



There was a wide range of animals used for research with mice (73%) and rats (9%) being the most common animals to work with. Out of the animals used there was a balance of genetically modified (GM; 52%) and non-GM animals (48%) used.

Animals	No. of grants	% of all animals
Mouse	583	73%
Rat	77	9%
Fish	30	4%
Other:		
Guinea pig	32	4%
Domestic fowl (<i>Gallus domesticus</i>)	29	4%
Insect	12	1%
Rabbit	10	1%
Sheep	6	1%
Pig	4	0%
Animals pre-birth developmental stage not protected by ASPA	4	0%
Other bird	3	0%
Ferret	2	0%
Amphibian	2	0%
Other mammal	2	0%
Primate	1	0%
Dog	1	0%
Gerbil	1	0%
Reptile	1	0%
Worm	1	0%
Total	801	

The figures in this briefing are very similar to those from last year. You can access our briefing on animal use in grants awarded in 2015 [here](#).